

UVP GelDoc-It^e

Easy, Efficient and Economical Gel Documentation!

High resolution 5.0 MP camera

Optical zoom lens, with fast f/1.2 aperture, is adjustable for fine tuning the image field of view; lens focus is lockable for repeat experiments

Unique viewer window provides direct, UV protected viewing of samples

Side doors enable easy access for excision or repositioning of illuminated gel

Integrated UV transilluminator features large 21x26cm filter area, single or multiple UV wavelength models are available

Broadband EtBr emission filter (included) achieves enhanced signal detection

Filter tray easily slides out for exchange of filters to support numerous applications

Compact darkroom reduces lab bench space requirements

VisionWorks Software for image acquisition, analysis and reporting

External computer (order separately)



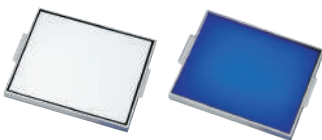
Image Capture, Enhancement and Quantitative Analysis

UVP GelDoc-It^e Imaging Systems provide a plug-and-play configuration and easy-to-operate design. One-touch preset image capture buttons allow for fast image acquisition of a variety of stained gels. VisionWorks[®] Software features efficient image capture, quantitative 1D analysis and gel documentation capabilities. The streamlined software interface enables users to easily select functions as well as set personalized templates for repeat experiments.

Applications: Fluorescence DNA and Protein Gels.

View stains including: ■ Ethidium bromide ■ GelGreen[™] ■ GelRed[™] ■ Coomassie Blue
■ Instant Blue ■ Silver ■ SYBR[®] Gold, Green

For colorimetric imaging, add a Visi-White[™] Plate which converts UV transillumination to white light for Silver Stains, Coomassie Blue and more.



For blue light imaging, add a Visi-Blue[™] Plate allows illumination of stained gels such as SYBR Green, GelGreen and UV safe gels.

VisionWorks[®] Acquisition and Analysis Software

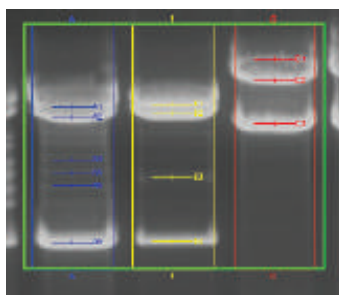
Unlimited copies of the comprehensive VisionWorks software package for image capture, enhancement and analysis is included with the UVP GelDoc-It^e Imaging Systems.

Easy-to-Use Templates for Acquisition

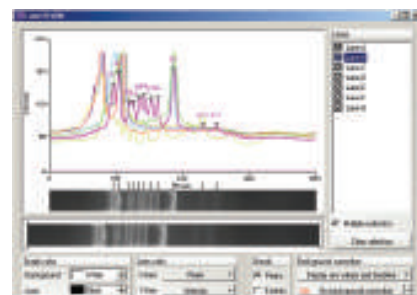
- One-touch image capture templates
- Customizable templates for automating system settings (lighting, focus, zoom, filter position, etc)
- Unlimited template storage capability

Image Enhancement and Analysis

- High accuracy quantitation features such 1D analysis, area density analysis, calibration and colony counting
- Extensive image enhancement settings for creating publication quality images
- VisionWorks offers history tracking logs for 21 CFR Part 11 compliance
- Create reports showing extensive analysis results including Molecular Weight (MW), Rf, band intensities and area density calculations. Export data to Excel.



Use the 1D Analysis function to automatically find and label lanes and bands. Easily adjust the parameters.



Use the 1D Analysis Lane Profile Graph to generate graphical representation of lanes and bands data.

Darkroom Specifications:

Dimensions: 14.2W x 13.3D x 30.7H in (361 x 338 x 780mm)
Voltage: 100-115V or 230V

Software:

Capabilities: Image acquisition and extensive 1D quantitative analysis, area density, colony counting

Tools: Macros, templates, image enhancement and annotation

Documentation: Create reports/export data

Compatibility: Windows 7 or 8 (32 or 64 bit)

UV Transilluminator:

Select filter size: 21 x 26cm
UV wavelengths: Single UV (302nm), 2UV or 3UV (254/302/365nm)

Camera Specifications:

Megapixels: 5.0 MP
Lens: 8-48mm f/1.2 zoom
Image Resolution: 2592 x 1944 pixels
CCD Bit Depth: 12 bit
File Bit Depth: 16 bit

** Camera specifications subject to change without notice. Contact AJ US for current camera specifications.



WolfLabs

Pricing on any accessories shown can be found by keying the part number into the search box on our website.

The specifications listed in this brochure are subject to change by the manufacturer and therefore cannot be guaranteed to be correct. If there are aspects of the specification that must be guaranteed, please provide these to our sales team so that details can be confirmed.

www.wolflabs.co.uk

Tel : 01759 301142

Fax : 01759 301143

sales@wolflabs.co.uk

Please contact us if this literature doesn't answer all your questions.